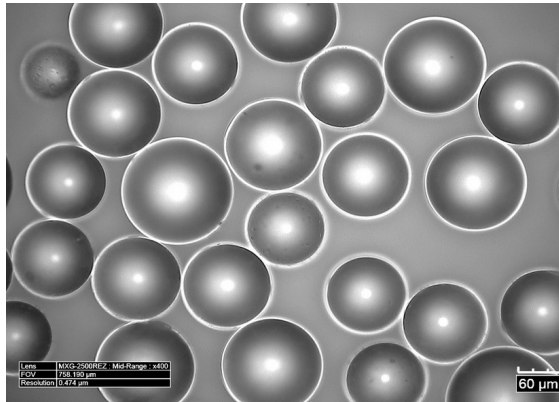


Solid Soda-lime Glass Microspheres Data Sheet



Typical Properties:

Appearance: Solid soda-lime glass microspheres with colorless in powder form.

Chemical Composition (Wt %):

SiO ₂	Al ₂ O ₃	CaO	MgO	Na ₂ O	Fe ₂ O ₃
67-75	0-5	6-15	1-5	10-20	< 1

Physical Properties

Specific Gravity	2.4 - 2.6 (g/cm ³)
Bulk Density	1.5 - 1.6 (g/cm ³)
Softening Temperature	650 °C
Coefficient of Thermal Expansion	90 x 10 ⁻⁷ /°C (30-300 °C)
Compression Strength	40,000 (psi)
Index of Refraction	1.50 – 1.52 (n _D)

The technical information listed represents the best information available to us and is believed to be accurate. However, it should not be relied upon. We urge users of our materials to conduct confirmation tests to determine final suitability for their application.